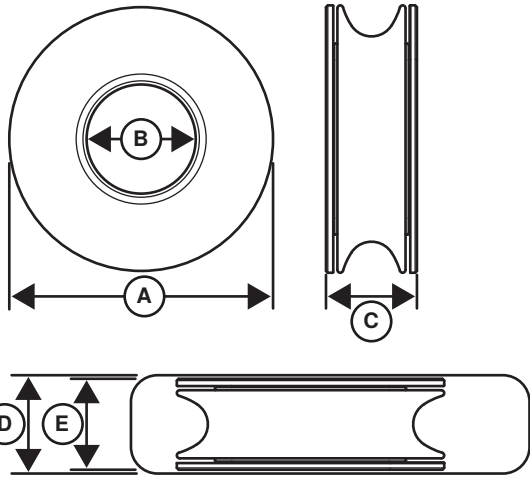
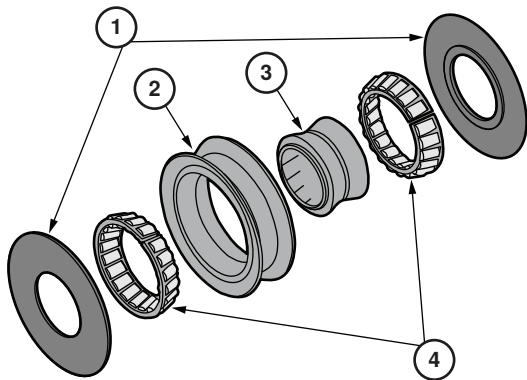


2. SPECIFICATIONS



Part No.	Name	Sheave Ø (A)		Center pin Ø (B)		Sheave width (C)		Max line Ø		Maximum working load		Breaking load	
		mm	in.	mm	in.	mm	in.	mm	in.	kg	lb	kg	lb
3355	1.5T	47	1.85	15.71	0.619	18.8	0.74	9	11/32	1,500	3,300	3,000	6,600
3384	1.5T Wide	47	1.85	15.71	0.619	27.4	1.08	2X 9	2X 11/32	1,500	3,300	3,000	6,600
3356	3T	56	2.20	22.67	0.893	19	0.75	11	7/16	3,000	6,600	6,000	13,200
C14843	3T Wide	56	2.20	15.71	0.619	30	1.18	8	7/16	3,000	6,600	6,000	13,200
3358	3T Wide Tulip	56	2.20	15.71	0.619	30	1.18	2X 11	2X 7/16	3,000	6,600	6,000	13,200
3357	5T	62	2.44	22.67	0.893	23.9	0.94	13	1/2	5,000	11,000	10,000	22,000
3382	5T Wide	62	2.44	22.67	0.893	32.3	1.27	2X 13	2X 1/2	5,000	11,000	10,000	22,000
3378	5T Wide Tulip	62	2.44	22.67	0.893	35.3	1.39	2X 13	2X 1/2	5,000	11,000	10,000	22,000
3379	6.5T	82	3.23	32.81	1.292	29.1	1.48	16	5/8	6,500	14,300	13,000	28,600
3375	6.5T Wide Tulip	82	3.23	32.81	1.292	45.7	1.80	2X 16	2X 5/8	6,500	14,300	13,000	28,600
3377	8T	104	4.09	44.82	1.765	32.4	1.27	18	11/32	8,000	17,600	16,000	35,200
3376	8T Wide Tulip	104	4.09	44.82	1.765	51.2	2.02	2X 18	2X 11/32	8,000	17,600	16,000	35,200
3380	12T	120	4.72	64.82	2.552	33.6	1.32	22	7/8	12,000	26,400	24,000	52,800
3383	12T Wide Tulip	120	4.72	64.82	2.552	65.5	2.58	2X 18	2X 11/32	12,000	26,400	24,000	52,800
3385	16T	135	5.32	74.82	2.946	38.7	1.52	26	1 1/16	16,000	35,200	32,000	70,400
C14823	16T Wide Tulip	135	5.32	74.82	2.946	72	2.835	26	1 1/16	16,000	35,200	32,000	70,400
3381	20T	155	6.10	74.82	2.946	40.4	1.59	30	1 3/16	20,000	44,000	40,000	88,000

3. NOMENCLATURE



Country of Manufacture - USA

Harken, Inc.

N15W24983 Bluemound Rd., Pewaukee, WI 53072-4974 USA

Telephone: +1 262 691-3320

Web: www.harken.com, Email: harken@harken.com

Printed in USA.

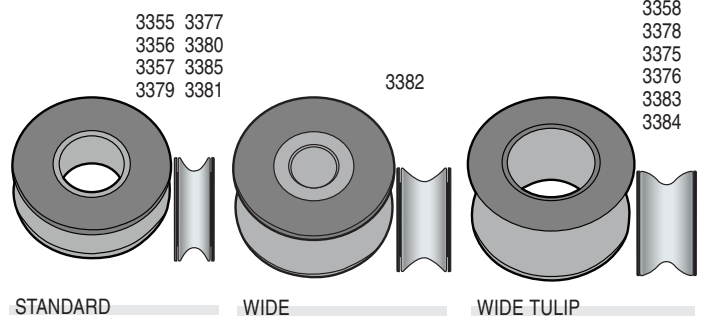
5202A 03/2025

Instruction Sheet

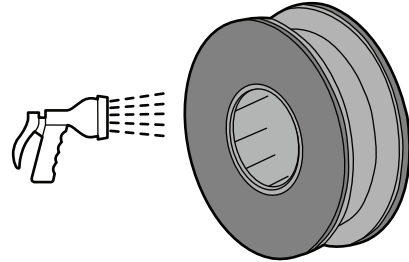
HARKEN

V™ Sheaves

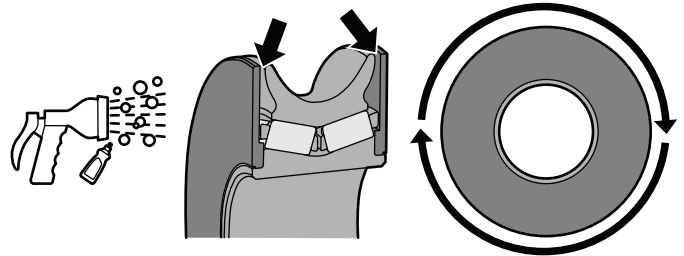
4. SHEAVE PROFILE



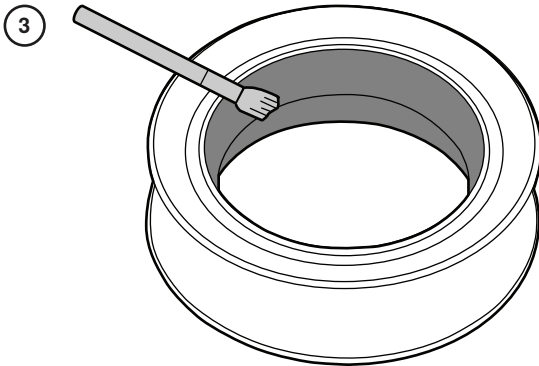
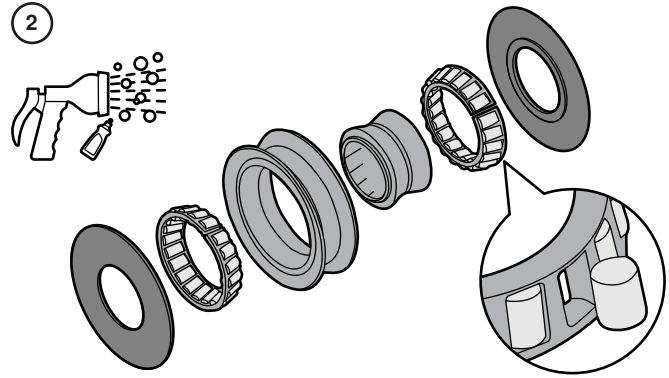
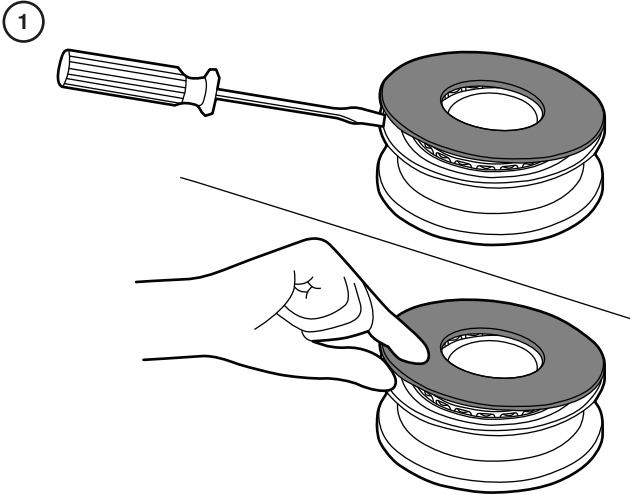
6. GENERAL MAINTENANCE



7. PERIODIC MAINTENANCE



8. ANNUAL MAINTENANCE



9. V-SHEAVE REPLACEMENT PART NUMBERS

Part No.	Description	Side cover	Qty.	Roller	Qty.	Roller cage	Sheave	Inner race
3355	1.5T	H-77970	2	MS-525	30	H-73941	MS-524	MS-556
3384	1.5T Wide	H-77970	2	MS-525	30	H-73941	H-79261	H-79262
3356	3T	H-77965	2	MS-525	36	H-73780	MS-531	MS-557
3358	3T Wide Tulip	H-77965	2	MS-525	36	H-73780	MS-544	MS-558
3357	5T	H-77652	2	MS-535	38	H-73939	MS-528	MS-559
3382	5T Wide	H-77652	2	MS-535	38	H-73939	MS-550	H-82256
3378	5T Wide Tulip	H-77652	2	MS-535	38	H-73939	H-81894	H-81895
3379	6.5T	H-81290	2	MS-536	40	H-73977	MS-534	H-81289
3375	6.5T Wide Tulip	H-81290	2	MS-536	40	H-73977	H-81573	H-81572
3377	8T	H-81615	2	MS-554	46	H-74985	MS-553	H-81709
3376	8T Wide Tulip	H-81615	2	MS-554	46	H-74985	H-81614	H-81616
3380	12T	H-81309	2	MS-554	54	H-81308	H-81306	H-81307
3383	12T Wide Tulip	H-81309	2	MS-554	54	H-81308	H-82265	H-82264
3385	16T	H-81765	2	MS-554	64	H-81767	H-81765	H-82411
3381	20T	H-81061	2	H-81062	66	H-81064	H-81061	H-81063

WARNING:

STRICTLY FOLLOW ALL INSTRUCTIONS TO AVOID AN ACCIDENT, DAMAGE TO YOUR VESSEL, PERSONAL INJURY OR DEATH. SEE WWW.HARKEN.COM/MANUALS FOR ADDITIONAL SAFETY INFORMATION.

1. DESCRIPTION

High-load titanium V sheaves feature angled titanium rollers. Snap fit Delrin® side covers require no tools to disassemble for maintenance. V sheaves mount into spar or deck sheave boxes. The bearing system combines axial and thrust bearings into a single bearing set of angled titanium rollers. Use the wide sheave for two-sheet peels. Use the wide-tulip sheaves to handle a single line with line-entry range of deflecting angles.

NOTE: Delrin is a registered trademark of E. I. du Pont de Nemours and Company or its affiliates.

2. SPECIFICATIONS

The supporting sides of the sheave box (D) should be: 0.75 mm larger than the sheave width (E) +/- 0.25 mm.

3. NOMENCLATURE

1. Sidecover
2. Sheave
3. Inner race
4. Roller cage with rollers

4. SHEAVE PROFILE

1. Standard
2. Wide
3. Wide tulip

5. SIZING SHEAVE AND CENTER PIN

Do not exceed maximum working loads. Loads increase when the line turns at a greater angle. Example: Sheave loads double when the line turns 180 degrees. Refer to block loading formulas in Harken, Inc. catalog. Center pin not included.

6. GENERAL MAINTENANCE

Harken, Inc. equipment requires minimal maintenance, but some maintenance is required to give the best service and to comply with the Harken, Inc. limited warranty.

In corrosive atmospheres, stainless parts can show discoloration around holes,

rivets, and screws. This is not serious and can be removed with a fine abrasive.

IMPORTANT! Exposure to some teak cleaners and other caustic solutions can result in discoloration of part and is not covered under the Harken, Inc. warranty.

7. PERIODIC MAINTENANCE

See diagrams.

8. ANNUAL MAINTENANCE

IMPORTANT! Do not force bearing cage. Remove rollers for cleaning or replacement by pushing outward. Install from outside pushing in.

Clean and remove grease using solvent. Lightly grease inner ring of sheave.

9. V-SHEAVE REPLACEMENT PART NUMBERS

See diagrams.

10. WARRANTY

For additional safety, maintenance, and warranty information; www.harken.com/manuals or the Harken, Inc. catalog.