

HARKEN®

INSTRUCTION SHEET

Tulip Vertical Fixed Blocks 9030, 9031, 9032
Tulip Over-the-Top Blocks 9033, 9034, 9035

N15W24983 Bluemound Rd. • Pewaukee, WI 53072 U.S.A.
Telephone: (262) 691-3320 • Fax: (262) 701-5780
Web: www.harken.com • E-mail: harken@harken.com



Strictly follow all instructions to avoid an accident, damage to your vessel, personal injury, or death.
See www.harken.com/manuals for additional safety information.

Part No.	Block	Max Line Ø	Maximum Working Load (MWL)	Breaking Load (BL)	Purchase Fasteners (FH)		
					A4 (316) or A2 (18-8) stainless steel		Qty
					Size	Type	
9030	45 mm vertical	1/2" 12 mm	2,750 lbs 1,247 kg	5,500 lbs 2,495 kg	1/4" 6 mm	Button head	3
9031	60 mm vertical	9/16" 14 mm	5,000 lbs 2,268 kg	10,000 lbs 4,536 kg	5/16" 8 mm	Button head	3
9032	75 mm vertical	9/16" 14 mm	8,000 lbs 3,629 kg	16,000 lbs 7,257 kg	3/8" 10 mm	Button head	3
9033	45 mm over the top	1/2" 12 mm	2,750 lbs 1,247 kg	5,500 lbs 2,495 kg	1/4" 6 mm	Button head	3
9034	60 mm over the top	9/16" 14 mm	5,000 lbs 2,268 kg	10,000 lbs 4,536 kg	5/16" 8 mm	Button head	3
9035	75 mm over the top	9/16" 14 mm	8,000 lbs 3,629 kg	16,000 lbs 7,257 kg	3/8" 10 mm	Button head	3

Note: Blocks can be installed with or without removing the sheave.

Installation for Vertical Blocks and Over-the-Top Blocks

Install Blocks by Removing Sheave

Note: When installing vertical blocks, verify sheave is leaning away from mast (FIG 1).

1. Remove sheave (FIG 2). Remove screw from one side of assembly. Remove centerpost from the opposite side.

Tip: Don't worry about losing balls in sheave, they are captive. If post is stuck, leave screw halfway in and push on screw head to push post out other side.

2. Mark position of holes (FIG 3). Slide the washer into the carrier's groove before marking the hole under the sheave.

Tip: When installing over-the-top blocks, insert shaft without sheaves to hold carriers together while marking holes.



WARNING! You must mount to solid deck construction using specified fasteners in all mounting holes and nuts, washers or backing plates to achieve correct maximum working load.

Tip: When installing vertical blocks, verify block is aligned with load by drilling a forward hole, inserting screw and sheave, running line to deck block, and allowing block to center itself. Remove and drill other hole(s).

3. Mount carrier(s) (FIG 4). Drill holes and secure washer to deck using fastener. Install remaining fasteners to deck using sealant, backing plates, and locknuts. **Do not overtighten fasteners; sheave will bind.**

Tip: Slightly bevel top of hole in deck to allow sealant to mass near top of hole.

4. Install sheave (FIG 5). Install centerpost into either side of assembly. Use blue Loctite® on screw threads and secure.

Install Blocks Without Removing Sheave

Note: When installing vertical blocks, verify sheave is leaning away from mast (FIG 1).

1. Mark position of holes (FIG 6). Slide the washer into the carrier's groove before marking the hole under the sheave.



WARNING! You must mount to solid deck construction using specified fasteners in all mounting holes and nuts, washers or backing plates to achieve correct maximum working load.

2. Drill hole for washer (FIG 7). Set block assembly aside. Drill hole and install washer and fastener to deck.

3. Slide block assembly into washer (FIG 8).

4. Install remaining fasteners (FIG 9).

Install Blocks by Removing Sheave

FIG 1

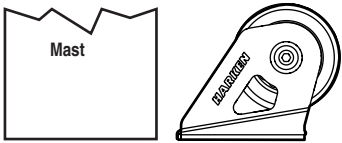


FIG 2

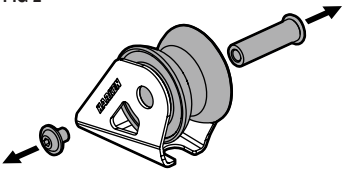


FIG 3

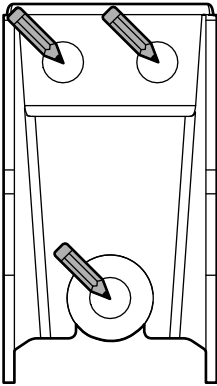


FIG 4

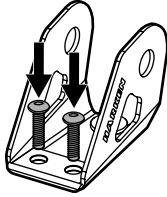
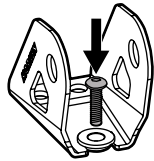
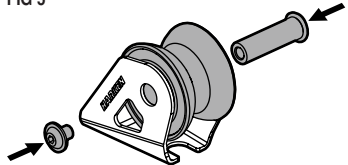


FIG 5



Install Blocks Without Removing Sheave

FIG 6

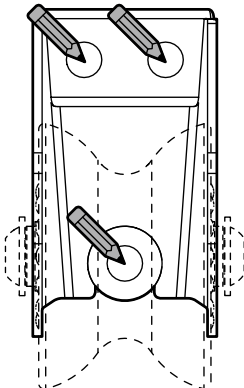


FIG 7

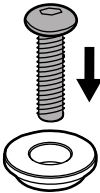


FIG 8

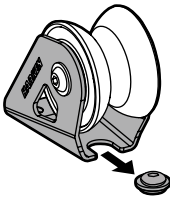
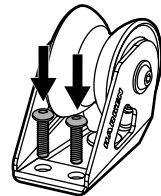


FIG 9



Inspect

Carefully inspect fasteners, mounting hardware, and shackles for signs of loosening, cracks, or damage. Secure fasteners using threadlocking solution. Replace damaged parts.

Maintenance

Keep your equipment clean and free-running by frequently flushing with fresh water. Periodically clean with mild detergent and water solution. Spin sheaves to distribute soap solution evenly. Occasionally disassemble and clean rollers and balls with detergent and water solution. Assemble using blue Loctite® on screws.

Stainless fasteners which pass through aluminum blocks should be coated with an antiseize compound such as Tef-Gel®.

IMPORTANT! Exposure to some teak cleaners and other caustic solutions can result in discoloration of part and is not covered under the Harken warranty.

Warranty

For additional safety, maintenance and warranty information see www.harken.com/manuals or the Harken® catalog.

Loctite is a registered trademark of Henkel AG & Company KGaA
Tef-Gel is a registered trademark of Ultra Safety Systems, Inc.

Printed in USA. 5484 09/2024